

# archmodels

2013



Have you ever lost your race with time doing visualizations? Have you ever been embarrassed of unfinished renders, spending all night on the modeling process, instead of rendering? If you are an architect, and if you need to work fast but with highest precision, this is the thing for you. Archmodels volume 133 gives you 33 professional sets of objects for architectural visualizations. This DVD comes with low poly city sets with all the textures and materials. It is ready to use, just put it into your scene. Why waste costly time for making something that you can have from the best at Evermotion?



Software and models © 2013 EVERMOTION. EVERMOTION logo is trademark or registered trademark of Evermotion Inc. in the U.S. and/or other countries. All rights reserved. All \*.max, \*.obj, models included on this DVDROM with data are an integral part of "archmodels vol.133" and the resale of this data is strictly prohibited. All models can be used for commercial purposes only by owners who bought this DVDROM. The sharing of DVDROM data is strictly prohibited unless that user has written authorization from EVERMOTION.

volume 133

archmodels  
2013



Have you ever lost your race with time doing visualizations? Have you ever been embarrassed of unfinished renders, spending all night on the modeling process, instead of rendering? If you are an architect, and if you need to work fast but with highest precision, this is the thing for you. Archmodels volume 133 gives you 33 professional sets of objects for architectural visualizations. This DVD comes with low poly city sets with all the textures and materials. It is ready to use, just put it into your scene. Why waste costly time for making something that you can have from the best at Evermotion?



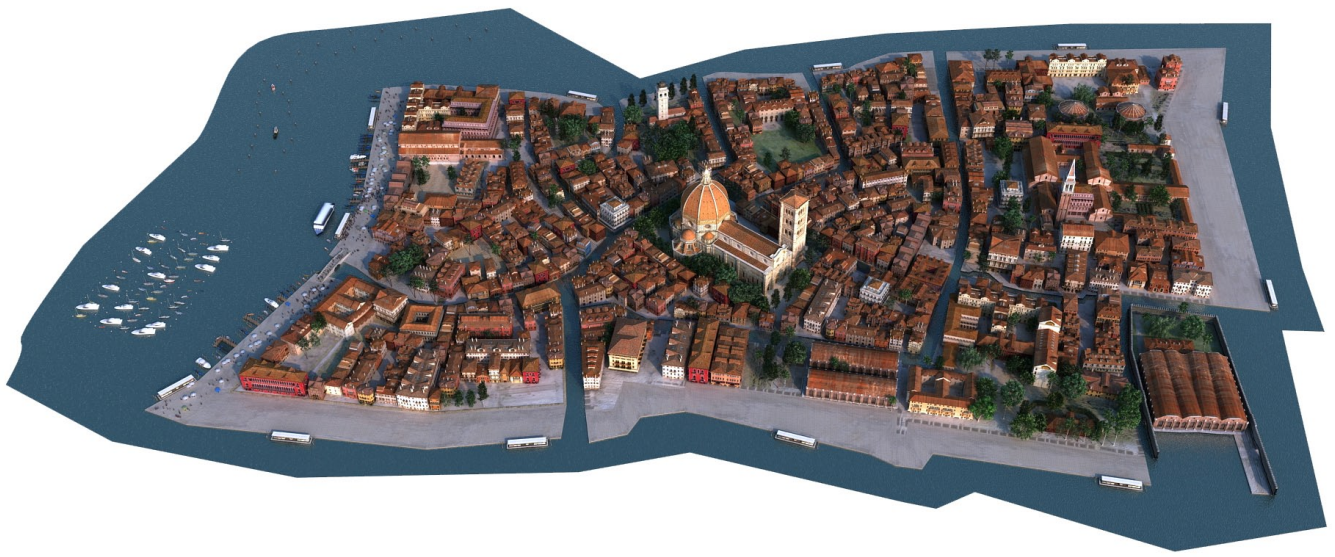
Software and models © 2013 EVERMOTION. EVERMOTION logo is trademark or registered trademark of Evermotion Inc. in the U.S. and/or other countries. All rights reserved. All \*.max, \*.obj, models included on this DVDROM with data are an integral part of "archmodels vol.133" and the resale of this data is strictly prohibited. All models can be used for commercial purposes only by owners who bought this DVDROM. The sharing of DVDROM data is strictly prohibited unless that user has written authorization from EVERMOTION.

# archmodels

2013



Have you ever lost your race with time doing visualizations? Have you ever been embarrassed of unfinished renders, spending all night on the modeling process, instead of rendering? If you are an architect, and if you need to work fast but with highest precision, this is the thing for you. Archmodels volume 133 gives you 33 professional sets of objects for architectural visualizations. This DVD comes with low poly city sets with all the textures and materials. It is ready to use, just put it into your scene. Why waste costly time for making something that you can have from the best at Evermotion?



city example **01**  
camera **01**

# archmodels

2013



Have you ever lost your race with time doing visualizations? Have you ever been embarrassed of unfinished renders, spending all night on the modeling process, instead of rendering? If you are an architect, and if you need to work fast but with highest precision, this is the thing for you. Archmodels volume 133 gives you 33 professional sets of objects for architectural visualizations. This DVD comes with low poly city sets with all the textures and materials. It is ready to use, just put it into your scene. Why waste costly time for making something that you can have from the best at Evermotion?



city example **01**  
camera **02**

Software and models © 2013 EVERMOTION. EVERMOTION logo is trademark or registered trademark of Evermotion Inc. in the U.S. and/or other countries. All rights reserved. All \*.max, \*.obj, models included on this DVDROM with data are an integral part of "archmodels vol.133" and the resale of this data is strictly prohibited. All models can be used for commercial purposes only by owners who bought this DVDROM. The sharing of DVDROM data is strictly prohibited unless that user has written authorization from EVERMOTION.

# archmodels

2013



Have you ever lost your race with time doing visualizations? Have you ever been embarrassed of unfinished renders, spending all night on the modeling process, instead of rendering? If you are an architect, and if you need to work fast but with highest precision, this is the thing for you. Archmodels volume 133 gives you 33 professional sets of objects for architectural visualizations. This DVD comes with low poly city sets with all the textures and materials. It is ready to use, just put it into your scene. Why waste costly time for making something that you can have from the best at Evermotion?



city **01**  
set **01**



city **01**  
set **02**

Software and models © 2013 EVERMOTION. EVERMOTION logo is trademark or registered trademark of Evermotion Inc. in the U.S. and/or other countries. All rights reserved. All \*.max, \*.obj, models included on this DVDROM with data are an integral part of "archmodels vol.133" and the resale of this data is strictly prohibited. All models can be used for commercial purposes only by owners who bought this DVDROM. The sharing of DVDROM data is strictly prohibited unless that user has written authorization from EVERMOTION.

# archmodels

2013



Have you ever lost your race with time doing visualizations? Have you ever been embarrassed of unfinished renders, spending all night on the modeling process, instead of rendering? If you are an architect, and if you need to work fast but with highest precision, this is the thing for you. Archmodels volume 133 gives you 33 professional sets of objects for architectural visualizations. This DVD comes with low poly city sets with all the textures and materials. It is ready to use, just put it into your scene. Why waste costly time for making something that you can have from the best at Evermotion?



city **01**  
set **03**



city **01**  
set **04**

Software and models © 2013 EVERMOTION. EVERMOTION logo is trademark or registered trademark of Evermotion Inc. in the U.S. and/or other countries. All rights reserved. All \*.max, \*.obj, models included on this DVDROM with data are an integral part of "archmodels vol.133" and the resale of this data is strictly prohibited. All models can be used for commercial purposes only by owners who bought this DVDROM. The sharing of DVDROM data is strictly prohibited unless that user has written authorization from EVERMOTION.

# archmodels

2013



Have you ever lost your race with time doing visualizations? Have you ever been embarrassed of unfinished renders, spending all night on the modeling process, instead of rendering? If you are an architect, and if you need to work fast but with highest precision, this is the thing for you. Archmodels volume 133 gives you 33 professional sets of objects for architectural visualizations. This DVD comes with low poly city sets with all the textures and materials. It is ready to use, just put it into your scene. Why waste costly time for making something that you can have from the best at Evermotion?



city **01**  
set **05**



city **01**  
set **06**

Software and models © 2013 EVERMOTION. EVERMOTION logo is trademark or registered trademark of Evermotion Inc. in the U.S. and/or other countries. All rights reserved. All \*.max, \*.obj, models included on this DVDROM with data are an integral part of "archmodels vol.133" and the resale of this data is strictly prohibited. All models can be used for commercial purposes only by owners who bought this DVDROM. The sharing of DVDROM data is strictly prohibited unless that user has written authorization from EVERMOTION.

# archmodels

2013



Have you ever lost your race with time doing visualizations? Have you ever been embarrassed of unfinished renders, spending all night on the modeling process, instead of rendering? If you are an architect, and if you need to work fast but with highest precision, this is the thing for you. Archmodels volume 133 gives you 33 professional sets of objects for architectural visualizations. This DVD comes with low poly city sets with all the textures and materials. It is ready to use, just put it into your scene. Why waste costly time for making something that you can have from the best at Evermotion?



city **01**  
set **07**



city **01**  
set **08**

Software and models © 2013 EVERMOTION. EVERMOTION logo is trademark or registered trademark of Evermotion Inc. in the U.S. and/or other countries. All rights reserved. All \*.max, \*.obj, models included on this DVDROM with data are an integral part of "archmodels vol.133" and the resale of this data is strictly prohibited. All models can be used for commercial purposes only by owners who bought this DVDROM. The sharing of DVDROM data is strictly prohibited unless that user has written authorization from EVERMOTION.



# archmodels

2013



Have you ever lost your race with time doing visualizations? Have you ever been embarrassed of unfinished renders, spending all night on the modeling process, instead of rendering? If you are an architect, and if you need to work fast but with highest precision, this is the thing for you. Archmodels volume 133 gives you 33 professional sets of objects for architectural visualizations. This DVD comes with low poly city sets with all the textures and materials. It is ready to use, just put it into your scene. Why waste costly time for making something that you can have from the best at Evermotion?



# archmodels

2013



Have you ever lost your race with time doing visualizations? Have you ever been embarrassed of unfinished renders, spending all night on the modeling process, instead of rendering? If you are an architect, and if you need to work fast but with highest precision, this is the thing for you. Archmodels volume 133 gives you 33 professional sets of objects for architectural visualizations. This DVD comes with low poly city sets with all the textures and materials. It is ready to use, just put it into your scene. Why waste costly time for making something that you can have from the best at Evermotion?



city example **02**  
camera **01**

# archmodels

2013



Have you ever lost your race with time doing visualizations? Have you ever been embarrassed of unfinished renders, spending all night on the modeling process, instead of rendering? If you are an architect, and if you need to work fast but with highest precision, this is the thing for you. Archmodels volume 133 gives you 33 professional sets of objects for architectural visualizations. This DVD comes with low poly city sets with all the textures and materials. It is ready to use, just put it into your scene. Why waste costly time for making something that you can have from the best at Evermotion?



# archmodels

2013



Have you ever lost your race with time doing visualizations? Have you ever been embarrassed of unfinished renders, spending all night on the modeling process, instead of rendering? If you are an architect, and if you need to work fast but with highest precision, this is the thing for you. Archmodels volume 133 gives you 33 professional sets of objects for architectural visualizations. This DVD comes with low poly city sets with all the textures and materials. It is ready to use, just put it into your scene. Why waste costly time for making something that you can have from the best at Evermotion?



Software and models © 2013 EVERMOTION. EVERMOTION logo is trademark or registered trademark of Evermotion Inc. in the U.S. and/or other countries. All rights reserved. All \*.max, \*.obj, models included on this DVDROM with data are an integral part of "archmodels vol.133" and the resale of this data is strictly prohibited. All models can be used for commercial purposes only by owners who bought this DVDROM. The sharing of DVDROM data is strictly prohibited unless that user has written authorization from EVERMOTION.

# archmodels

2013



Have you ever lost your race with time doing visualizations? Have you ever been embarrassed of unfinished renders, spending all night on the modeling process, instead of rendering? If you are an architect, and if you need to work fast but with highest precision, this is the thing for you. Archmodels volume 133 gives you 33 professional sets of objects for architectural visualizations. This DVD comes with low poly city sets with all the textures and materials. It is ready to use, just put it into your scene. Why waste costly time for making something that you can have from the best at Evermotion?



city **02**  
set **03**



city **02**  
set **04**

Software and models © 2013 EVERMOTION. EVERMOTION logo is trademark or registered trademark of Evermotion Inc. in the U.S. and/or other countries. All rights reserved. All \*.max, \*.obj, models included on this DVDROM with data are an integral part of "archmodels vol.133" and the resale of this data is strictly prohibited. All models can be used for commercial purposes only by owners who bought this DVDROM. The sharing of DVDROM data is strictly prohibited unless that user has written authorization from EVERMOTION.

# archmodels

2013



Have you ever lost your race with time doing visualizations? Have you ever been embarrassed of unfinished renders, spending all night on the modeling process, instead of rendering? If you are an architect, and if you need to work fast but with highest precision, this is the thing for you. Archmodels volume 133 gives you 33 professional sets of objects for architectural visualizations. This DVD comes with low poly city sets with all the textures and materials. It is ready to use, just put it into your scene. Why waste costly time for making something that you can have from the best at Evermotion?



city **02**  
set **05**



city **02**  
set **06**

Software and models © 2013 EVERMOTION. EVERMOTION logo is trademark or registered trademark of Evermotion Inc. in the U.S. and/or other countries. All rights reserved. All \*.max, \*.obj, models included on this DVDROM with data are an integral part of "archmodels vol.133" and the resale of this data is strictly prohibited. All models can be used for commercial purposes only by owners who bought this DVDROM. The sharing of DVDROM data is strictly prohibited unless that user has written authorization from EVERMOTION.

# archmodels

2013



Have you ever lost your race with time doing visualizations? Have you ever been embarrassed of unfinished renders, spending all night on the modeling process, instead of rendering? If you are an architect, and if you need to work fast but with highest precision, this is the thing for you. Archmodels volume 133 gives you 33 professional sets of objects for architectural visualizations. This DVD comes with low poly city sets with all the textures and materials. It is ready to use, just put it into your scene. Why waste costly time for making something that you can have from the best at Evermotion?



city **02**  
set **07**



city **02**  
set **08**

Software and models © 2013 EVERMOTION. EVERMOTION logo is trademark or registered trademark of Evermotion Inc. in the U.S. and/or other countries. All rights reserved. All \*.max, \*.obj, models included on this DVDROM with data are an integral part of "archmodels vol.133" and the resale of this data is strictly prohibited. All models can be used for commercial purposes only by owners who bought this DVDROM. The sharing of DVDROM data is strictly prohibited unless that user has written authorization from EVERMOTION.

# archmodels

2013



Have you ever lost your race with time doing visualizations? Have you ever been embarrassed of unfinished renders, spending all night on the modeling process, instead of rendering? If you are an architect, and if you need to work fast but with highest precision, this is the thing for you. Archmodels volume 133 gives you 33 professional sets of objects for architectural visualizations. This DVD comes with low poly city sets with all the textures and materials. It is ready to use, just put it into your scene. Why waste costly time for making something that you can have from the best at Evermotion?



city **02**  
set **09**



city **02**  
set **10**

Software and models © 2013 EVERMOTION. EVERMOTION logo is trademark or registered trademark of Evermotion Inc. in the U.S. and/or other countries. All rights reserved. All \*.max, \*.obj, models included on this DVDROM with data are an integral part of "archmodels vol.133" and the resale of this data is strictly prohibited. All models can be used for commercial purposes only by owners who bought this DVDROM. The sharing of DVDROM data is strictly prohibited unless that user has written authorization from EVERMOTION.



# archmodels

2013



Have you ever lost your race with time doing visualizations? Have you ever been embarrassed of unfinished renders, spending all night on the modeling process, instead of rendering? If you are an architect, and if you need to work fast but with highest precision, this is the thing for you. Archmodels volume 133 gives you 33 professional sets of objects for architectural visualizations. This DVD comes with low poly city sets with all the textures and materials. It is ready to use, just put it into your scene. Why waste costly time for making something that you can have from the best at Evermotion?



city **02**  
set **11**



city **02**  
set **12**

Software and models © 2013 EVERMOTION. EVERMOTION logo is trademark or registered trademark of Evermotion Inc. in the U.S. and/or other countries. All rights reserved. All \*.max, \*.obj, models included on this DVDROM with data are an integral part of "archmodels vol.133" and the resale of this data is strictly prohibited. All models can be used for commercial purposes only by owners who bought this DVDROM. The sharing of DVDROM data is strictly prohibited unless that user has written authorization from EVERMOTION.

# archmodels

2013



Have you ever lost your race with time doing visualizations? Have you ever been embarrassed of unfinished renders, spending all night on the modeling process, instead of rendering? If you are an architect, and if you need to work fast but with highest precision, this is the thing for you. Archmodels volume 133 gives you 33 professional sets of objects for architectural visualizations. This DVD comes with low poly city sets with all the textures and materials. It is ready to use, just put it into your scene. Why waste costly time for making something that you can have from the best at Evermotion?

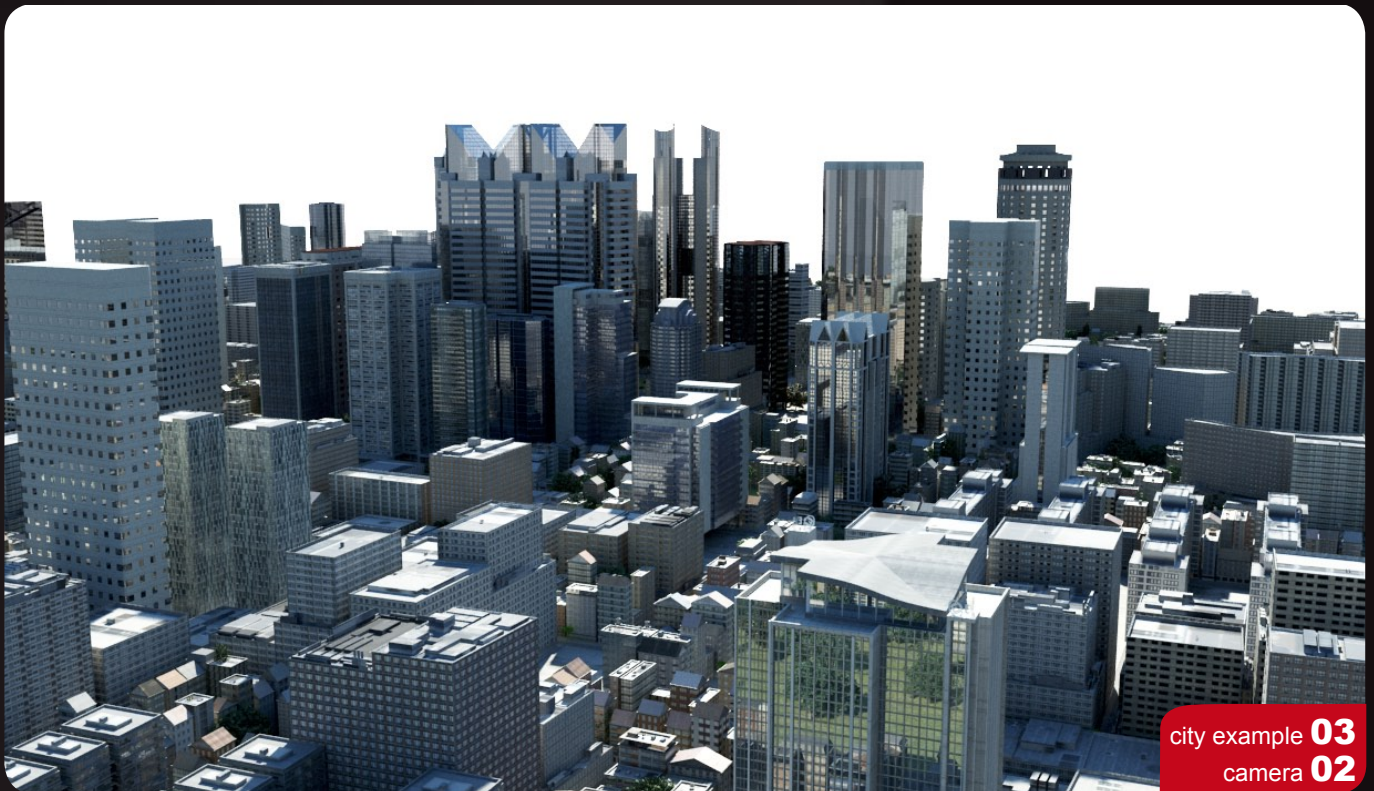


# archmodels

2013



Have you ever lost your race with time doing visualizations? Have you ever been embarrassed of unfinished renders, spending all night on the modeling process, instead of rendering? If you are an architect, and if you need to work fast but with highest precision, this is the thing for you. Archmodels volume 133 gives you 33 professional sets of objects for architectural visualizations. This DVD comes with low poly city sets with all the textures and materials. It is ready to use, just put it into your scene. Why waste costly time for making something that you can have from the best at Evermotion?



# archmodels

2013



Have you ever lost your race with time doing visualizations? Have you ever been embarrassed of unfinished renders, spending all night on the modeling process, instead of rendering? If you are an architect, and if you need to work fast but with highest precision, this is the thing for you. Archmodels volume 133 gives you 33 professional sets of objects for architectural visualizations. This DVD comes with low poly city sets with all the textures and materials. It is ready to use, just put it into your scene. Why waste costly time for making something that you can have from the best at Evermotion?



city **03**  
set **01**



city **03**  
set **02**

Software and models © 2013 EVERMOTION. EVERMOTION logo is trademark or registered trademark of Evermotion Inc. in the U.S. and/or other countries. All rights reserved. All \*.max, \*.obj, models included on this DVDROM with data are an integral part of "archmodels vol.133" and the resale of this data is strictly prohibited. All models can be used for commercial purposes only by owners who bought this DVDROM. The sharing of DVDROM data is strictly prohibited unless that user has written authorization from EVERMOTION.

# archmodels

2013



Have you ever lost your race with time doing visualizations? Have you ever been embarrassed of unfinished renders, spending all night on the modeling process, instead of rendering? If you are an architect, and if you need to work fast but with highest precision, this is the thing for you. Archmodels volume 133 gives you 33 professional sets of objects for architectural visualizations. This DVD comes with low poly city sets with all the textures and materials. It is ready to use, just put it into your scene. Why waste costly time for making something that you can have from the best at Evermotion?

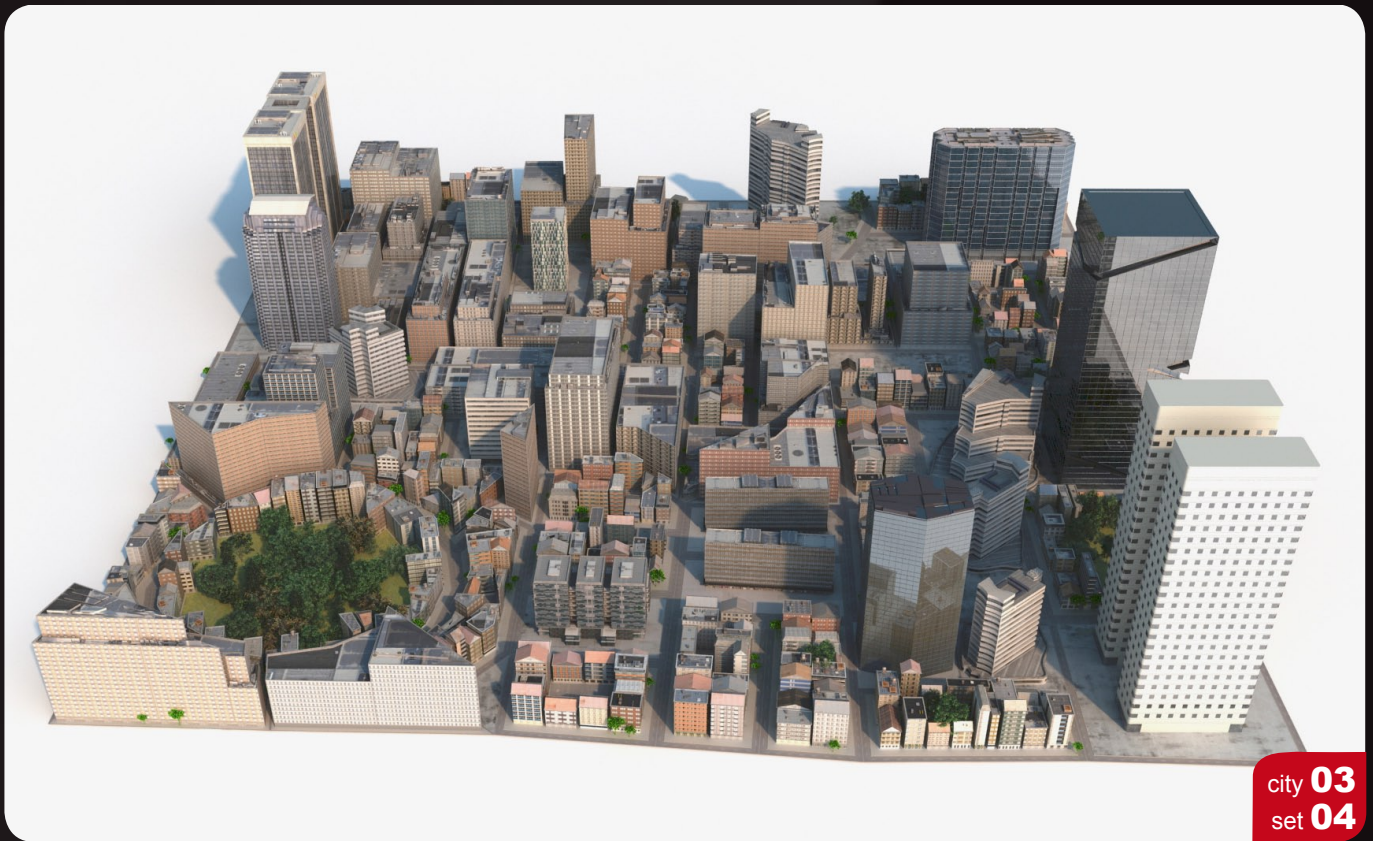


# archmodels

2013



Have you ever lost your race with time doing visualizations? Have you ever been embarrassed of unfinished renders, spending all night on the modeling process, instead of rendering? If you are an architect, and if you need to work fast but with highest precision, this is the thing for you. Archmodels volume 133 gives you 33 professional sets of objects for architectural visualizations. This DVD comes with low poly city sets with all the textures and materials. It is ready to use, just put it into your scene. Why waste costly time for making something that you can have from the best at Evermotion?

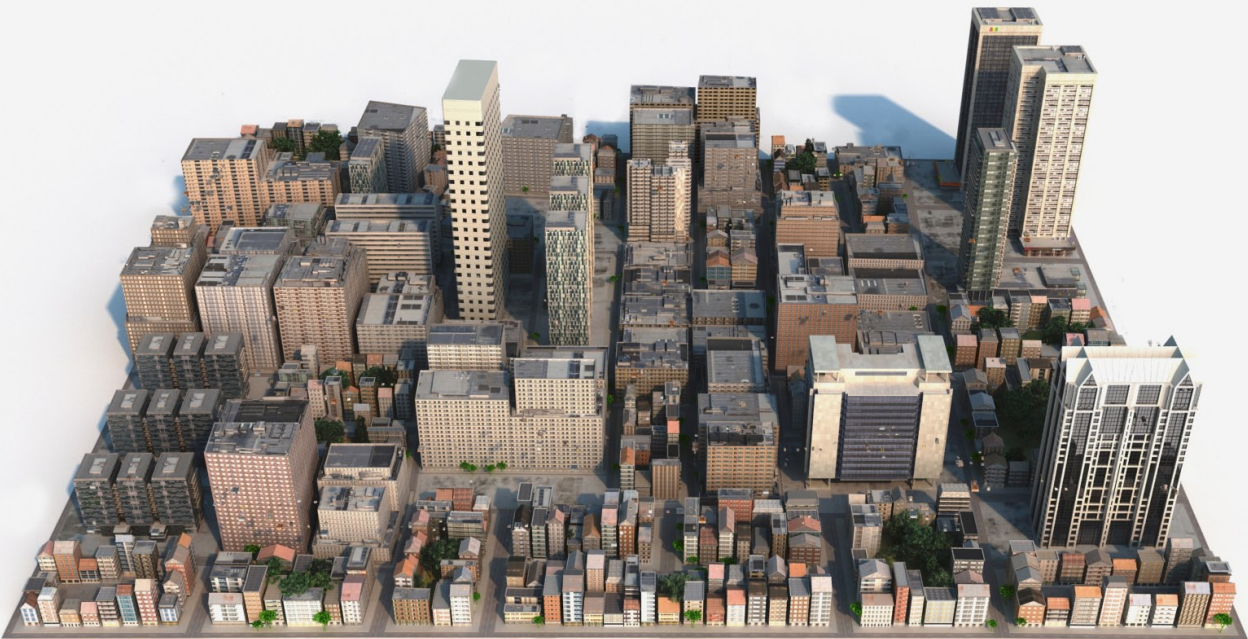


# archmodels

2013



Have you ever lost your race with time doing visualizations? Have you ever been embarrassed of unfinished renders, spending all night on the modeling process, instead of rendering? If you are an architect, and if you need to work fast but with highest precision, this is the thing for you. Archmodels volume 133 gives you 33 professional sets of objects for architectural visualizations. This DVD comes with low poly city sets with all the textures and materials. It is ready to use, just put it into your scene. Why waste costly time for making something that you can have from the best at Evermotion?



city **03**  
set **05**

# archmodels

2013



Have you ever lost your race with time doing visualizations? Have you ever been embarrassed of unfinished renders, spending all night on the modeling process, instead of rendering? If you are an architect, and if you need to work fast but with highest precision, this is the thing for you. Archmodels volume 133 gives you 33 professional sets of objects for architectural visualizations. This DVD comes with low poly city sets with all the textures and materials. It is ready to use, just put it into your scene. Why waste costly time for making something that you can have from the best at Evermotion?





# archmodels

2013



Have you ever lost your race with time doing visualizations? Have you ever been embarrassed of unfinished renders, spending all night on the modeling process, instead of rendering? If you are an architect, and if you need to work fast but with highest precision, this is the thing for you. Archmodels volume 133 gives you 33 professional sets of objects for architectural visualizations. This DVD comes with low poly city sets with all the textures and materials. It is ready to use, just put it into your scene. Why waste costly time for making something that you can have from the best at Evermotion?

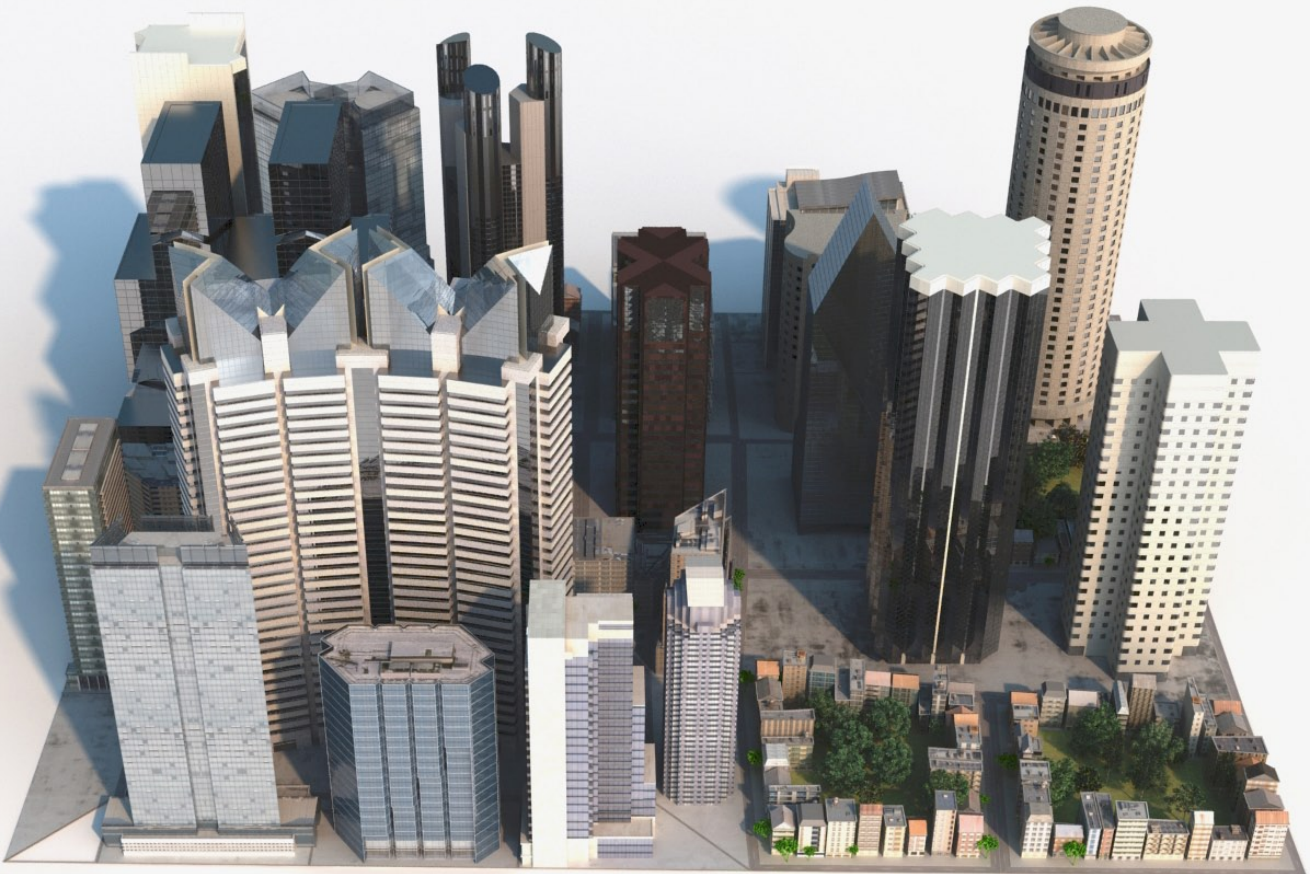


# archmodels

2013



Have you ever lost your race with time doing visualizations? Have you ever been embarrassed of unfinished renders, spending all night on the modeling process, instead of rendering? If you are an architect, and if you need to work fast but with highest precision, this is the thing for you. Archmodels volume 133 gives you 33 professional sets of objects for architectural visualizations. This DVD comes with low poly city sets with all the textures and materials. It is ready to use, just put it into your scene. Why waste costly time for making something that you can have from the best at Evermotion?



city **03**  
set **08**

Software and models © 2013 EVERMOTION. EVERMOTION logo is trademark or registered trademark of Evermotion Inc. in the U.S. and/or other countries. All rights reserved. All \*.max, \*.obj, models included on this DVDROM with data are an integral part of "archmodels vol.133" and the resale of this data is strictly prohibited. All models can be used for commercial purposes only by owners who bought this DVDROM. The sharing of DVDROM data is strictly prohibited unless that user has written authorization from EVERMOTION.

volume 133

# archmodels

2013



Have you ever lost your race with time doing visualizations? Have you ever been embarrassed of unfinished renders, spending all night on the modeling process, instead of rendering? If you are an architect, and if you need to work fast but with highest precision, this is the thing for you. Archmodels volume 133 gives you 33 professional sets of objects for architectural visualizations. This DVD comes with low poly city sets with all the textures and materials. It is ready to use, just put it into your scene. Why waste costly time for making something that you can have from the best at Evermotion?



city **03**  
set **09**

Software and models © 2013 EVERMOTION. EVERMOTION logo is trademark or registered trademark of Evermotion Inc. in the U.S. and/or other countries. All rights reserved. All \*.max, \*.obj, models included on this DVDROM with data are an integral part of "archmodels vol.133" and the resale of this data is strictly prohibited. All models can be used for commercial purposes only by owners who bought this DVDROM. The sharing of DVDROM data is strictly prohibited unless that user has written authorization from EVERMOTION.

# archmodels

2013



Have you ever lost your race with time doing visualizations? Have you ever been embarrassed of unfinished renders, spending all night on the modeling process, instead of rendering? If you are an architect, and if you need to work fast but with highest precision, this is the thing for you. Archmodels volume 133 gives you 33 professional sets of objects for architectural visualizations. This DVD comes with low poly city sets with all the textures and materials. It is ready to use, just put it into your scene. Why waste costly time for making something that you can have from the best at Evermotion?

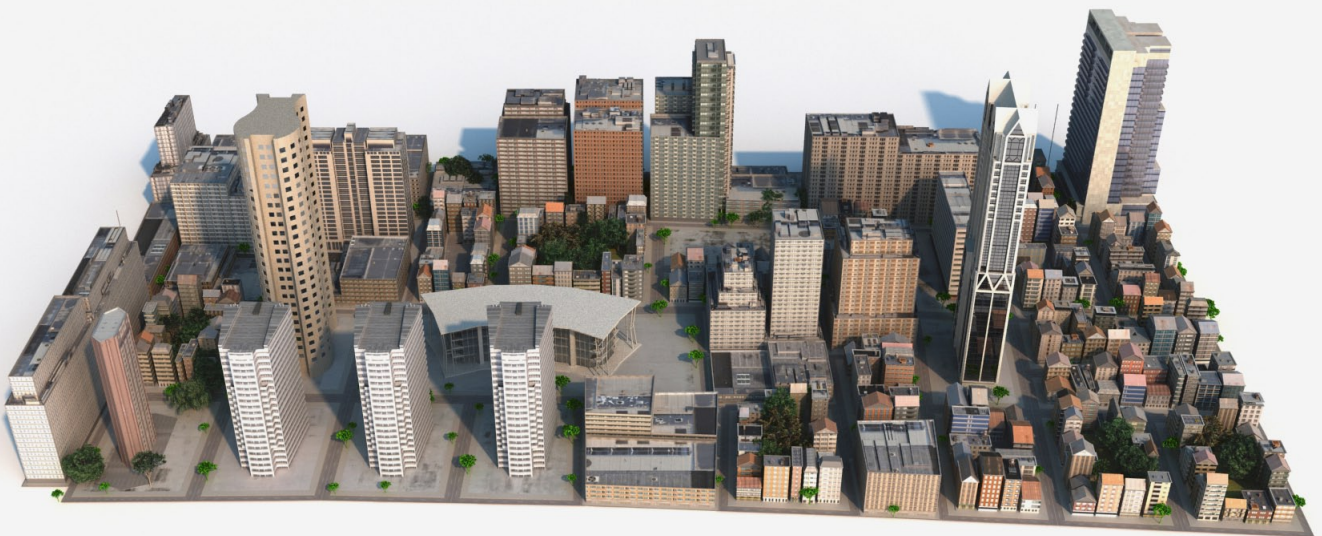


# archmodels

2013



Have you ever lost your race with time doing visualizations? Have you ever been embarrassed of unfinished renders, spending all night on the modeling process, instead of rendering? If you are an architect, and if you need to work fast but with highest precision, this is the thing for you. Archmodels volume 133 gives you 33 professional sets of objects for architectural visualizations. This DVD comes with low poly city sets with all the textures and materials. It is ready to use, just put it into your scene. Why waste costly time for making something that you can have from the best at Evermotion?



city **03**  
set **11**

# archmodels

2013



Have you ever lost your race with time doing visualizations? Have you ever been embarrassed of unfinished renders, spending all night on the modeling process, instead of rendering? If you are an architect, and if you need to work fast but with highest precision, this is the thing for you. Archmodels volume 133 gives you 33 professional sets of objects for architectural visualizations. This DVD comes with low poly city sets with all the textures and materials. It is ready to use, just put it into your scene. Why waste costly time for making something that you can have from the best at Evermotion?



city **03**  
set **12**